



TEKS® STAND-OFF

USES A STANDARD INSTALLATION METHOD AND PRESERVES A SPECIFIED STAND-OFF DISTANCE BETWEEN WALL MATERIAL AND STRUCTURAL FASTENING POINT.

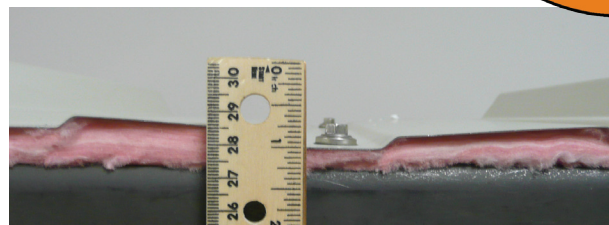
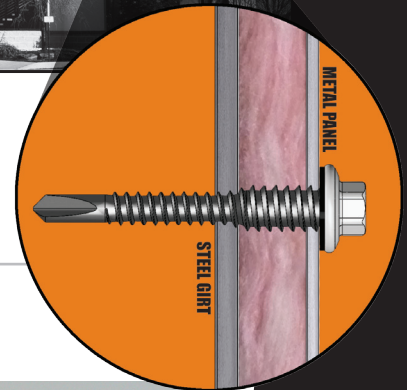
FEATURES

- > **STOP AND LOCK DESIGN**
 - Preserves the appropriate stand-off distance between wall and structure resulting in less insulation compression.
 - Prevents fastener over-driving that can distort wall panel.
 - Pre-determined depth of drive provides a physical stopping point as a measurement preventing over-driven or under-driven EPDM washers eliminating potential leaks and increasing the water tight seal.
 - Uses traditional installation methods.
 - Installs faster than stand-off solutions that require physical spacers or additional building material.
 - Works with 4 – 8" blanket insulation. Contact the building manufacturer for maximum insulation thickness and density allowed.
- > **PATENTED ANTI-BACKOUT (ABOT) THREAD DESIGN**
 - Does not distort or damage wall panel.
 - Provides a stronger fastening point for wall panel.
 - Reduces wall push-off.
- > **TEKS® DRILL POINT**
 - Efficient drilling designed specifically for the material in the stand-off application.
- > **MULTIPLE HEAD STYLES AVAILABLE**
 - Scots® 300 Stainless Steel Encapsulated Head
 - Weather-tight seal, even when driven at an angle of up to 15° from vertical with the wall panel.
 - Head will not rust. Ever!
 - EPDM rubber washer is seated under the fastener head, extending the washer life and improving washer contact with material being fastened.
 - Preferred product for long life panels (including galvalume).
 - Climaseal® coating tested to ASTM B117 standard - 1,000 hours salt spray.
 - Maxiseal® Integrated Washer Head
 - Weather-tight seal, even when driven at an angle of up to 15° from vertical with the wall panel.
 - EPDM rubber washer is seated under the fastener head, extending the washer life and improving washer contact with material being fastened.
 - Climaseal® coating tested to ASTM B117 standard - 1,000 hours salt spray.
- > **P3 POWDER COATING**
 - Chalk and fade performance equivalent to 70% fluoropolymer coated metal panels.
 - Available in over 100 industry standard colors.
 - Available on both head styles.

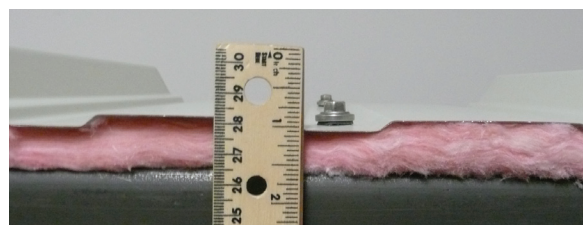
APPLICATIONS



- > Blanket Insulation
- > Metal Building Sidewall



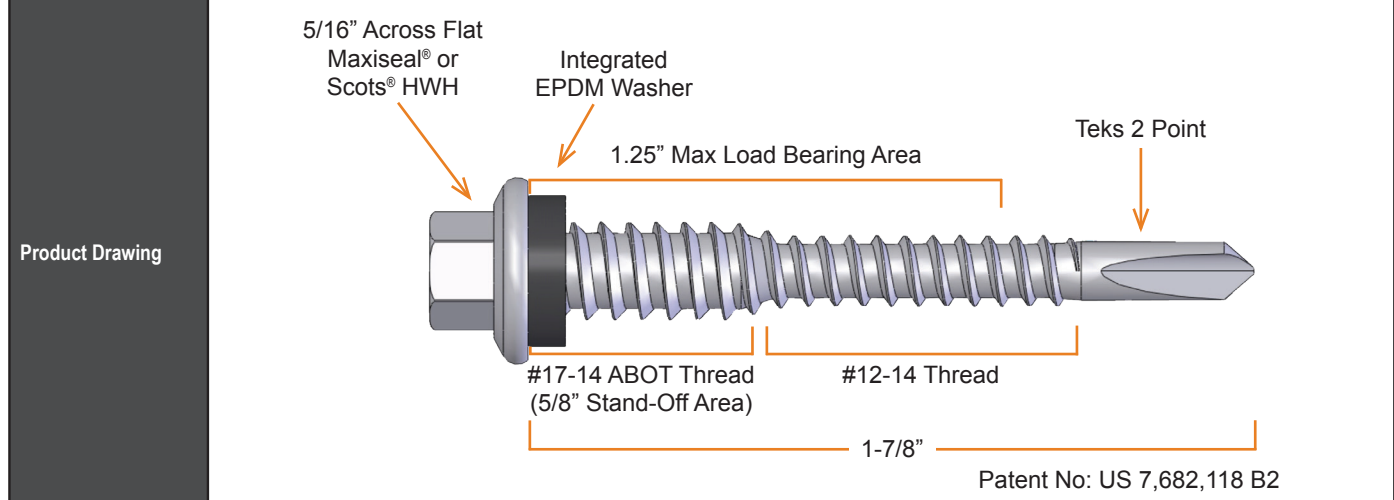
Single Diameter #12 Screw
(26 ga. panel, 17 ga. girt, 6" fiberglass insulation)



TEKS® Stand-Off with Scots® Head Style (5/8" Stand-Off)
(26 ga. panel, 17 ga. girt, 6" fiberglass insulation)

SELECTOR GUIDE & PERFORMANCE DATA

Part Number	1215053	1303053
Description	#17 (5/8") #12-14 X 1-7/8"	#17 (5/8") #12-14 X 1-7/8"
Head Style	Maxiseal® Hex Washer Head	Scots® Hex Washer Head
Drill Point	Teks 2	Teks 2
Drilling Capacity	.210"	.210"
Max Stand-Off	.625"	.625"



Installation Tool	5/16" Driv-Tru™ Socket (P/N: 1513910)	5/16" Driv-Tru™ Socket (P/N: 1513910)
-------------------	---------------------------------------	---------------------------------------

PULLOVER VALUES (AVERAGE LBS. ULTIMATE)

STEEL GAUGE	panel	girt		
26			686	686

PULLOUT VALUES (AVERAGE LBS. ULTIMATE)

STEEL GAUGE	panel	girt		
17			985	985

SHEAR VALUES (AVERAGE LBS. ULTIMATE)

STEEL GAUGE	panel	girt		
26	17		602	602

FASTENER MECHANICAL PROPERTIES

Fastener (dia-tpi)	Tensile (lbs. min.)	Shear (avg. lbs. ult.)	Torque (min. in. lbs.)
12-14	2778	2000	92

PRODUCT SPECIFICATIONS

Application Attaches metal exterior wall panels to a building's metal structural members and preserves a specific stand-off distance for insulation.

Short Form Self-drilling and tapping fastener, dual-diameter design, anti-back-out thread, Teks 2 drill point, Maxiseal® head design, Scots® head design, P3 Paint.

Diameters Wall Material Load Bearing Area #17, Stand-Off Area #17, Structural Attachment Load-Bearing Area #12.

Thread Form Anti-Backout Thread 14 Threads Per Inch

Head Styles Hex Washer Head Maxiseal®, Hex Washer Head Scots®

Drill Point Teks® 2

Finish Climaseal® coating tested per ASTM B117 1,000 hours salt spray, P3 Powder coated head paint available



1349 W. Bryn Mawr Ave. | Itasca, IL 60143
800-BUILDEX | www.itwbuildex.com



Teks®, Maxiseal®, Scots® and Driv-Tru™ are trademarks of ITW Buildex and Illinois Tool Works, Inc.
©ITW Buildex and Illinois Tool Works, Inc. BX100611_rev2